

Excelon® design allows in-line or modular installation

Full flow gauge ports

Balanced valve design minimizes effect of variation in the inlet pressure on the outlet pressure

Standard relieving models allow reduction of downstream pressure when the system is dead-ended



Technical data

Fluid:

Compressed air, neutral gases
NOTE: Contact technical support for use with other media.
Maximum pressure:
300 psig (20 bar)

Operating temperature*:

-30° to 175°F (-34° to 80°C)
(72) -30° to 150°F
*Air supply must be dry enough to avoid ice formation at temperatures below 35°F (2°C).

Materials

R72G
Body: zinc
Bonnet: acetal (Zinc on 250 psi model)
Elastomers: nitrile
Bottom plug: acetal
Valve: polypropylene and TPV

R73G, R74G

Body: aluminum
Bonnet: (73) zinc, (74) aluminum
Elastomers: nitrile
Bottom plug: acetal
Valve: polypropylene and TPV

Ordering information

Models listed include uni-directional flow, PTF threads, knob adjustment, relieving diaphragm, 5 to 150 psig (0.3 to 10 bar) outlet pressure adjustment range*, with gauge.

ISO Symbol	Port Size	Model	Flow* scfm (dm3/s)	Weight lb (kg)
<p>R7*G Relieving</p>	1/4"	R72G-2AK-RMG	70 (33)	0.79 (0.36)
	1/4"	R73G-2AK-RMG	91 (43)	1.36 (0.6)
	3/8"	R73G-3AK-RMG	144 (68)	1.36 (0.6)
	3/8"	R74G-3AK-RMG	208 (98)	1.80 (0.82)
	1/2"	R74G-4AK-RMG	220 (105)	1.77 (0.80)
	3/4"	R74G-6AK-RMG	220 (105)	1.73 (0.78)

† Typical flow with 150 psig (10 bar) inlet pressure, 90 psig (6.3 bar) set pressure and a 15 psig (1 bar) droop from set.

Options selector

Series	Substitute	R7 ★ G-★★★-R★★		Gauge	Substitute
72	2			With	G
73	3			Without	N
74	4			Outlet press adj range*	Substitute
Port size	Substitute			5 to 30 psig (0.4 to 2 bar) (72)	C
1/4" (72, 73)	2			5 to 60 psig (0.4 to 4 bar)	F
3/8" (72, 73, 74)	3			5 to 150 psig (0.4 to 10 bar)	M
1/2" (73, 74)	4			10 to 250 psig (0.6 to 17 bar)**	S
3/4" (74)	6			Adjustment	Substitute
Threads	Substitute			Knob	K
PTF	A			T-bar	T
ISO G parallel	G				

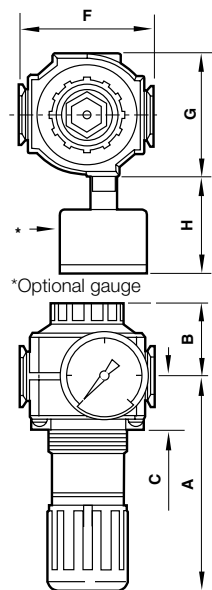
*Outlet pressure can be adjusted to pressures in excess of, and less than, those specified. Do not use these units to control pressures outside of the specified ranges.

**Units with 250 psig outlet pressure range are available only with the T-bar adjustment, substitute T at the 7th position and S at the 9th position.

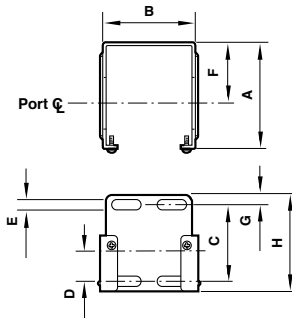
Accessories

	Wall mounting bracket*	Neck mounting bracket	Gauge 0 ... 160 psig	Panel nut	Tamper resistant cover and seal wire	Pipe adapters (quantity of 1) (NPT)	Quikclamp® (quantity of 1)	Quikclamp® and wall bracket (quantity of 1)	Service kit
R72G	4224-50	74316-50	18-013-212	4248-89	4255-51	4215-02 (1/4) 4215-03 (3/8)	4214-51	4214-52	4381-500
R73G	4424-50	4461-50	18-013-209	5191-88	4455-51	4315-01 (1/4) 4315-02 (3/8) 4315-03 (1/2) 4315-04 (3/4)	4314-51	4314-52	4381-600
R74G	4324-50	4368-51	18-013-209	4348-89	4355-51	4315-02 (3/8) 4315-03 (1/2) 4315-04 (3/4)	4314-51	4314-52	4381-700

* Bracket kit does not include wall mounting screws.



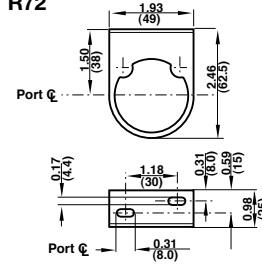
Mounting bracket



Series	A	B	C	D	E	F	G	H
72	2.36	1.65	1.54	0.73	0.16	1.50	0.24	2.01
73	2.64	2.36	1.89	0.75	0.28	1.50	0.24	2.40
74	3.11	2.72	1.97	0.79	0.20	2.01	0.24	2.40

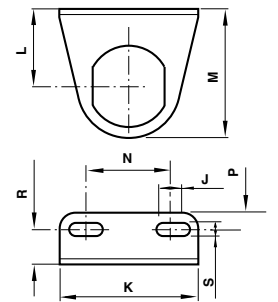
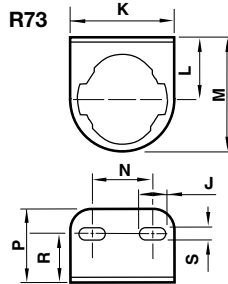
Neck mounting brackets

R72



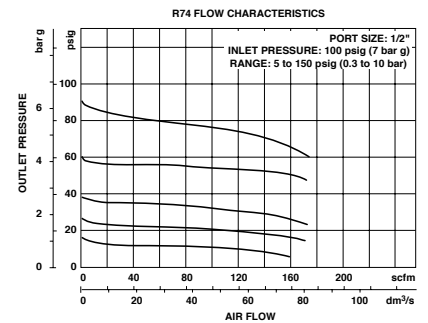
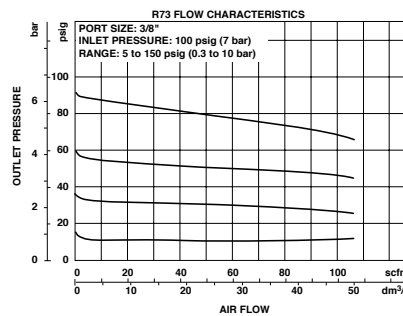
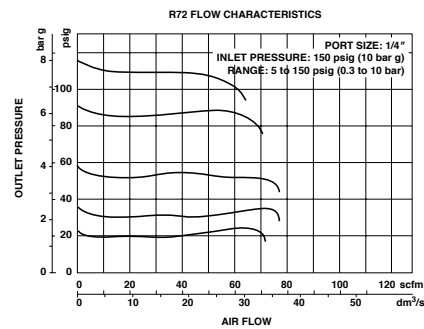
R74

R73



Series	A	B	C	F	G	H	Panel Ø	Panel depth
72	2.87	1.30	1.02	1.97	1.89	1.38	1.57	0 to .16
73	3.78	1.54	1.22	2.68	2.44	2.20	1.89	.07 to .25
74	5.00	1.69	1.22	3.15	2.91	2.20	2.05	.07 to .25

Series	J	K	L	M	N	P	R	S	T	V
72	0.31	1.93	1.50	2.50	1.18	0.94	-	0.17	0.31	0.59
73	0.67	2.52	1.50	2.76	1.50	1.50	0.98	0.28	-	-
74	0.94	3.50	2.05	3.39	2.20	1.38	0.91	0.28	-	-



Dimensions in inches (mm)