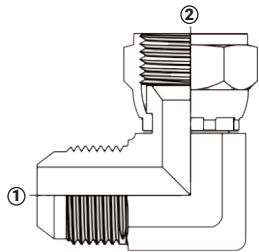
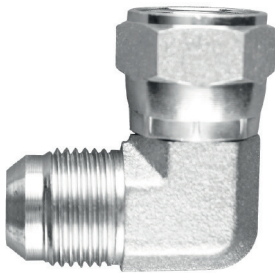


**Adaptadores Hidráulicos - Rosca Hembra JIC 37° Giratoria**

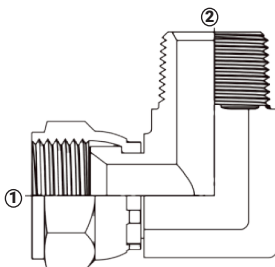
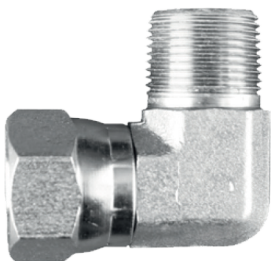
**Serie 6500 - Codo 90° Macho JIC 37° x Hembra JIC 37° Giratoria**



(1) Macho JIC  
(2) Hembra JIC giratoria  
SAE 070221

Rosca Macho JIC	Rosca Hembra JIC Giratoria	Acero al Carbón Zincado # de Parte	PSI
5/16"-24	5/16"-24	6500-2	5000
3/8"-24	3/8"-24	6500-3	5000
7/16"-20	7/16"-20	6500-4	4500
1/2"-20	9/16"-18	6500-5-6	4000
1/2"-20	1/2"-20	6500-5	4000
9/16"-18	7/16"-20	6500-6-4	4500
9/16"-18	3/4"-16	6500-6-8	4000
9/16"-18	9/16"-18	6500-6	4000
3/4"-16	9/16"-18	6500-8-6	4000
3/4"-16	7/8"-14	6500-8-10	3000
3/4"-16	1 1/16"-12	6500-8-12	3000
3/4"-16	3/4"-16	6500-8	4000
7/8"-14	3/4"-16	6500-10-8	3500
7/8"-14	1 1/16"-12	6500-10-12	3000
7/8"-14	7/8"-14	6500-10	3000
1 1/16"-12	3/4"-16	6500-12-8	3500
1 1/16"-12	7/8"-14	6500-12-10	3000
1 1/16"-12	1 5/16"-12	6500-12-16	2500
1 1/16"-12	1 1/16"-12	6500-12	3000
1 3/16"-12	1 3/16"-12	6500-14	2500
1 5/16"-12	1 5/16"-12	6500-16	2500
1 5/8"-12	1 5/8"-12	6500-20	2000
1 7/8"-12	1 7/8"-12	6500-24	1500
2 1/2"-12	2 1/2"-12	6500-32	1125

**Serie 6501 - Codo 90° Hembra JIC 37° Giratoria x Macho NPTF**



(1) Hembra JIC giratoria  
(2) Macho NPTF

Rosca Hembra JIC Giratoria	Rosca Macho NPTF	Acero al Carbón Zincado # de Parte	PSI
7/16"-20	1/8"-27	6501-4-2	4500
7/16"-20	1/4"-18	6501-4-4	4500
7/16"-20	3/8"-18	6501-4-6	4500
1/2"-20	1/8"-27	6501-5-2	4000
9/16"-18	1/4"-18	6501-6-4	4000
9/16"-18	3/8"-18	6501-6-6	4000
9/16"-18	1/2"-14	6501-6-8	3000
3/4"-16	3/8"-18	6501-8-6	4000
3/4"-16	1/2"-14	6501-8-8	3000
7/8"-14	1/2"-14	6501-10-8	3000
1 1/16"-12	3/4"-14	6501-12-12	2500
1 3/16"-12	3/4"-14	6501-14-12	2500
1 5/16"-12	1"-11 1/2	6501-16-16	2000
1 5/8"-12	1 1/4"-11 1/2	6501-20-20	1150
1 7/8"-12	1 1/2"-11 1/2	6501-24-24	1000
2 1/2"-12	2"-11 1/2	6501-32-32	1000