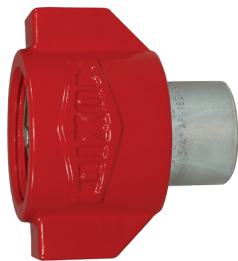


**Serie - WS-BOP Coples Hidráulicos**

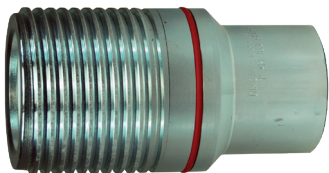
**Serie WS-BOP Cople de Seguridad Preventor de Reventón (Roscas Hembra)**



Medida	Detalle			Medida		D.E. Máximo		Hex pulg.
	# Parte	Roscas	Material	pulg.	mm.	pulg.	mm.	
3/4"	6WSF4-BOP	1/2" - 14 NPTF	Acero	2.76	70.1	3.31	82.0	---
	6WSF6-BOP	3/4" - 14 NPTF	Acero	2.76	70.1	3.31	82.0	---
	6WSF6-SS-BOP	3/4" - 14 NPTF	A.I. 316	2.76	70.1	3.31	82.0	---
1"	8WSF8-BOP	1" - 11-1/2 NPTF	Acero	3.45	87.6	4.10	101.6	---
	8WSF8-SS-BOP	1" - 11-1/2 NPTF	A.I. 316	3.45	87.6	4.10	101.6	---
1-1/4"	10WSF10-BOP	1-1/4" - 11-1/2 NPTF	Acero	4.40	111.8	4.78	118.1	---
	10WSF10-SS-BOP	1-1/4" - 11-1/2 NPTF	A.I. 316	4.40	111.8	4.78	118.1	---
1-1/2"	12WSF12-BOP	1-1/2" - 11-1/2 NPTF	Acero	5.13	130.3	5.68	137.9	---
	12WSF12-SS-BOP	1-1/2" - 11-1/2 NPTF	A.I. 316	5.13	130.3	5.68	137.9	---
2"	16WSF16-BOP	2" - 11-1/2 NPTF	Acero	6.09	154.7	6.90	170.9	---
	16WSF16-SS-BOP	2" - 11-1/2 NPTF	A.I. 316	6.09	154.7	6.90	170.9	---

**Serie WS-BOP Niple de Seguridad Preventor de Reventón (Roscas Hembra)**

K



Medida	Detalle			Medida		D.E. Máximo		Hex pulg.
	# Parte	Roscas	Material	pulg.	mm.	pulg.	mm.	
3/4"	WS6F4-BOP	1/2" - 14 NPTF	Acero	3.27	83.1	1.74	44.2	---
	WS6F6-BOP	3/4" - 14 NPTF	Acero	3.27	83.1	1.74	44.2	---
	WS6F6-SS-BOP	3/4" - 14 NPTF	A.I. 316	3.27	83.1	1.74	44.2	---
1"	WS8F8-BOP	1" - 11-1/2 NPTF	Acero	4.18	106.2	2.25	57.2	---
	WS8F8-SS-BOP	1" - 11-1/2 NPTF	A.I. 316	4.18	106.2	2.25	57.2	---
1-1/4"	WS10F10-BOP	1-1/4" - 11-1/2 NPTF	Acero	5.38	136.7	2.63	66.8	---
	WS10F10-SS-BOP	1-1/4" - 11-1/2 NPTF	A.I. 316	5.38	136.7	2.63	66.8	---
1-1/2"	WS12F12-BOP	1-1/2" - 11-1/2 NPTF	Acero	5.98	151.9	3.25	82.6	---
	WS12F12-SS-BOP	1-1/2" - 11-1/2 NPTF	A.I. 316	5.98	151.9	3.25	82.6	---
2"	WS16F16-BOP	2" - 11-1/2 NPTF	Acero	7.05	179.1	4.00	101.6	---
	WS16F16-SS-BOP	2" - 11-1/2 NPTF	A.I. 316	7.05	179.1	4.00	101.6	---