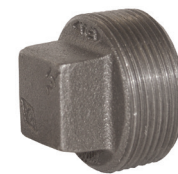


Tapón de Cabeza Cuadrada Rosca NPT

Característica:

- Los tapones de acero forjado y latón son sólidos; todos los demas tienen núcleo.

Macho NPT	Hierro 150# # de Parte	Hierro Galvanizado 150# # de Parte	Acero Inoxidable 316 150# # de Parte
1/8"	SHP18	SHP18G	SHP18SS
1/4"	SHP14	SHP14G	SHP14SS
3/8"	SHP38	SHP38G	SHP38SS
1/2"	SHP50	SHP50G	SHP50SS
3/4"	SHP75	SHP75G	SHP75SS
1"	SHP100	SHP100G	SHP100SS
1-1/4"	SHP125	SHP125G	SHP125SS
1-1/2"	SHP150	SHP150G	SHP150SS
2"	SHP200	SHP200G	SHP200SS
2-1/2"	SHP250	SHP250G	SHP250SS
3"	SHP300	SHP300G	SHP300SS
4"	SHP400	SHP400G	SHP400SS
5"	SHP500	---	---
6"	SHP600	SHP600G	---



Hierro 150#



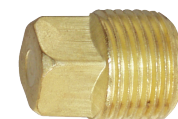
Hierro galvanizado 150#



Acero inoxidable 150#



Acero forjado 3000#



Latón 125#

Macho NPT	Acero Forjado 3000# # de Parte	Latón 125# # de Parte
1/8"	---	2110200C ^{1,2}
1/4"	SHP14FS	2110400C ^{1,2}
3/8"	SHP38FS	2110600C ^{1,2}
1/2"	SHP50FS	2110800C ^{1,2}
3/4"	SHP75FS	2111200C ^{1,2}
1"	SHP100FS	SHP100B
1-1/2"	SHP150FS	SHP150B
2"	SHP200FS	---
3"	SHP300FS	---

¹ Latón libre de plomo NSF/ANSI 372, Aleación de latón 260/270.

² Las roscas son PTF-SAE.

