

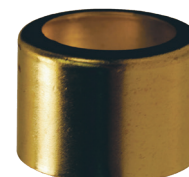
Férulas de Latón

Férulas para Aire

Latón # de Parte	Cant. por Caja	D.I. Férula	Largo Férula	Tam. Aguj. Extremo	Calibre Metal	# Parte Stnd. Ind.	Dado Acostillado*	Dado Liso*
BFM478	50	.478"	11/16"	21/64"	.024"	4750	R41	P41/P42
BFM500	50	.500"	1"	11/32"	.024"	7322	R40	P40
BFM525	50	.525"	1"	3/8"	.024"	7323	R39	P39
BFM531	50	.531"	1"	7/16"	.024"	7324	R39	P39
BFM562	50	.562"	1"	7/16"	.024"	7325	R37	P38
BFM593	50	.593"	1"	7/16"	.024"	7326	R36	P37
BFM625	50	.625"	1"	7/16"	.024"	7327	R35	P36
BFM656	50	.656"	1"	7/16"	.024"	7328	R34	P35
BFM687	50	.687"	1"	1/2"	.024"	7329	R33	P34
BFM718	50	.718"	1"	5/8"	.024"	7330	R31	P32
BFM718B	50	.718"	1"	1/2"	.024"	7330B	R31	P32
BFM750	50	.750"	1"	5/8"	.024"	7331	R30	P31
BFM750B	50	.750"	1"	1/2"	.024"	7331B	R30	P31
BFM781	50	.781"	1"	5/8"	.024"	7332	R29	P30
BFM781B	50	.781"	1"	1/2"	.024"	7332B	R29	P30
BFM812	50	.812"	1"	5/8"	.024"	7333	R28	P29
BFL380	50	.380"	1/2"	17/64"	.016"	622	R44	P45
BFL400	50	.400"	15/32"	17/64"	.020"	619	R44	P44
BFL410	50	.410"	1/2"	17/64"	.016"	620	R43	P44
BFL450	50	.450"	9/16"	11/32"	.016"	769	R41	P42
BFL500	50	.500"	1/2"	11/32"	.016"	624	R40	P41
BFL525	50	.525"	1/2"	11/32"	.016"	625	R39	P40
BFL548	50	.548"	31/64"	3/8"	.015"	626	R38	P39
BFL564	50	.564"	3/4"	3/8"	.019"	3588	R37	P38
BFL575	50	.575"	31/64"	15/32"	.019"	KK	R37	P38
BFL600	50	.600"	1/2"	1/2"	.019"	JJ	R36	P37
BFL625	50	.625"	1/2"	1/2"	.019"	II	R35	P36
BFL650	50	.650"	1/2"	1/2"	.019"	HH	R34	P35
BFL675	50	.675"	33/64"	1/2"	.019"	GG	R34	P34
BFL725	50	.725"	17/32"	1/2"	.019"	EE	R31	P32
BFL750	50	.750"	17/32"	1/2"	.019"	DD	R30	P32
BFL775	50	.775"	17/32"	1/2"	.016"	CC	R31	P31



BFM



BFL



P29



R28

* Estos dados son para usarse con las máquinas prensadoras de férulas 5111A y 1765A. Otros tamaños están disponibles bajo pedido.

* Se vende solo en cantidades por caja.