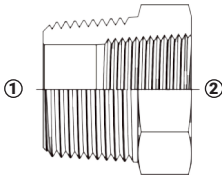


Adaptadores Hidráulicos - Rosca NPTF

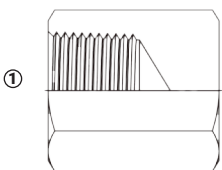
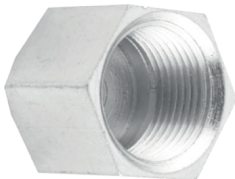
Serie 5406 - Reductor Bushing Macho NPTF x Hembra NPTF



(1) Macho NPTF
(2) Hembra NPTF

Rosca Macho NPTF	Rosca Hembra NPTF	Acero al Carbón Zincado # de Parte	PSI
1/4"-18	1/8"-27	5406-4-2	5000
3/8"-18	1/8"-27	5406-6-2	4000
3/8"-18	1/4"-18	5406-6-4	4000
1/2"-14	1/8"-27	5406-8-2	3000
1/2"-14	1/4"-18	5406-8-4	3000
1/2"-14	3/8"-18	5406-8-6	3000
3/4"-14	1/8"-27	5406-12-2	2500
3/4"-14	1/4"-18	5406-12-4	2500
3/4"-14	3/8"-18	5406-12-6	2500
3/4"-14	1/2"-14	5406-12-8	2500
1"- 11 1/2	1/4"-18	5406-16-4	2000
1"- 11 1/2	3/8"-18	5406-16-6	2000
1"- 11 1/2	1/2"-14	5406-16-8	2000
1"- 11 1/2	3/4"-14	5406-16-12	2000
1 1/4" - 11 1/2	3/8"-18	5406-20-6	1150
1 1/4" - 11 1/2	1/2"-14	5406-20-8	1150
1 1/4" - 11 1/2	3/4"-14	5406-20-12	1150
1 1/4" - 11 1/2	1"- 11 1/2	5406-20-16	1150
1 1/2" -11 1/2	1/2"-14	5406-24-8	1000
1 1/2" -11 1/2	3/4"-14	5406-24-12	1000
1 1/2" -11 1/2	1"- 11 1/2	5406-24-16	1000
1 1/2" -11 1/2	1 1/4" - 11 1/2	5406-24-20	1000
2"-11 1/2	1/2"-14	5406-32-8	1000
2"-11 1/2	3/4"-14	5406-32-12	1000
2"-11 1/2	1"- 11 1/2	5406-32-16	1000
2"-11 1/2	1 1/4" - 11 1/2	5406-32-20	1000
2"-11 1/2	1 1/2" -11 1/2	5406-32-24	1000
3"-8	2"-11 1/2	5406-48-32	1000

Serie 5406C - Tapa Hexagonal Hembra NPTF



(1) Hembra NPTF

Rosca Hembra NPTF	Acero al Carbón Zincado # de Parte	PSI
1/8"-27	5406C-2	5000
1/4"-18	5406C-4	5000
3/8"-18	5406C-6	3000
1/2"-14	5406C-8	3000
3/4"-14	5406C-12	2500
1"- 11 1/2	5406C-16	2000
1 1/4" - 11 1/2	5406C-20	1150
1 1/2" -11 1/2	5406C-24	1000
2"-11 1/2	5406C-32	1000