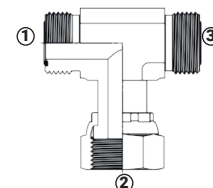
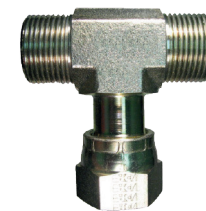


Adaptadores Hidráulicos - Rosca Cara Plana (Face Seal)

Serie FS6600 - Tee de Ramificación Macho FS x Hembra FS Giratoria x Macho FS

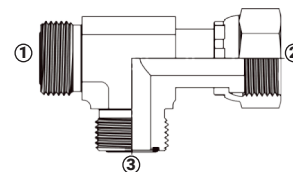
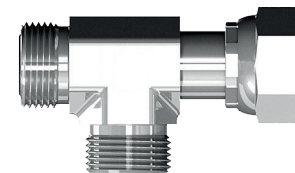
Rosca Macho Cara Plana	Rosca Hembra Cara Plana Giratoria	Acero al Carbón Zincado # de Parte	PSI
9/16"-18	9/16"-18	FS6600-4-4	6000
11/16"-16	11/16"-16	FS6600-6-6	6000
1 3/16"-16	1 3/16"-16	FS6600-8-8	6000
1"-14	1"-14	FS6600-10-10	6000
1 3/16"-12	1 3/16"-12	FS6600-12-12	6000
1 7/16"-12	1 7/16"-12	FS6600-16-16	6000
1 11/16"-12	1 11/16"-12	FS6600-20-20	6000
2"-12	2"-12	FS6600-24-24	4000



- (1) Macho Face Seal
- (2) Hembra Face Seal giratoria
- (3) Macho Face Seal

Serie FS6602 - Tee de Flujo Macho FS x Hembra FS Giratoria x Macho FS

Rosca Macho Cara Plana (2)	Rosca Hembra Cara Plana Giratoria	Acero al Carbón Zincado # de Parte	PSI
9/16"-18	9/16"-18	FS6602-4	6000
11/16"-16	11/16"-16	FS6602-6	6000
1 3/16"-16	1 3/16"-16	FS6602-8	6000
1"-14	1"-14	FS6602-10	6000
1 3/16"-12	1 3/16"-12	FS6602-12	6000
1 7/16"-12	1 7/16"-12	FS6602-16	6000
1 11/16"-12	1 11/16"-12	FS6602-20	6000
2"-12	2"-12	FS6602-24	4000



- (1) Macho Face Seal
- (2) Hembra Face Seal giratoria
- (3) Macho Face Seal