

Suajado Externo Ensamblajes con Brida

Característica:

- Ensamblajes de brida disponibles con vástago, férula y brida en acero al carbón o con vástago y brida en acero inoxidable 316 y la férula en acero al carbón. La brida es con barrenos ASA 150#. Disponible también en otros tamaños, consulte a Dixon® para precio.

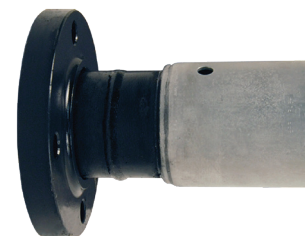
Brida Fija

D.I. Manguera	D.E. Manguera		Acero al Carbón # de Parte	Acero Inoxidable # de Parte
	desde	a		
2"	2-28/64"	2-40/64"	32P1SO15	R32P1SOR15
	2-41/64"	2-48/64"	32P2SO15	R32P2SOR15
	2-49/64"	2-56/64"	32P3SO15	R32P3SOR15
3"	3-30/64"	3-40/64"	48P1SO15	R48P1SOR15
	3-41/64"	3-48/64"	48P2SO15	R48P2SOR15
	3-49/64"	3-56/64"	48P3SO15	R48P3SOR15
4"	4-40/64"	4-44/64"	64P1SO15	R64P1SOR15
	4-45/64"	4-52/64"	64P2SO15	R64P2SOR15
	4-53/64"	4-60/64"	64P3SO15	R64P3SOR15
6"	7"	7-4/64"	96P1SO15	R96P1SOR15
	7-5/64"	7-12/64"	96P2SO15	R96P2SOR15
	7-13/64"	7-20/64"	96P3SO15	R96P3SOR15
8"	9-20/64"	9-24/64"	128P1SO15	---
	9-25/64"	9-32/64"	128P2SO15	---
	9-33/64"	9-40/64"	128P3SO15	---



Brida Flotante

D.I. Manguera	D.E. Manguera		Acero al Carbón # de Parte	Acero Inoxidable # de Parte
	desde	a		
2"	2-28/64"	2-40/64"	32P1LJ15	R32P1LJR15
	2-41/64"	2-48/64"	32P2LJ15	R32P2LJR15
	2-49/64"	2-56/64"	32P3LJ15	R32P3LJR15
3"	3-30/64"	3-40/64"	48P1LJ15	R48P1LJR15
	3-41/64"	3-48/64"	48P2LJ15	R48P2LJR15
	3-49/64"	3-56/64"	48P3LJ15	R48P3LJR15
4"	4-40/64"	4-44/64"	64P1LJ15	R64P1LJR15
	4-45/64"	4-52/64"	64P2LJ15	R64P2LJR15
	4-53/64"	4-60/64"	64P3LJ15	R64P3LJR15
6"	7"	7-4/64"	96P1LJ15	R96P1LJR15
	7-5/64"	7-12/64"	96P2LJ15	R96P2LJR15
	7-13/64"	7-20/64"	96P3LJ15	R96P3LJR15
8"	9-20/64"	9-24/64"	128P1LJ15	---
	9-25/64"	9-32/64"	128P2LJ15	---
	9-33/64"	9-40/64"	128P3LJ15	---



NOTA: Para dimensiones de bridas, diagramas e información adicional, favor de contactar dixonvalve.com.mx