

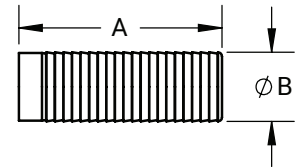
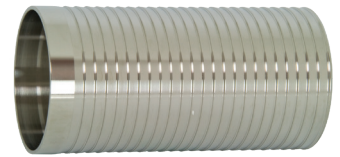
Adaptadores Soldables

Adaptador Largo Soldable para Manguera - 14WHRL

Característica:

- Apto para utilizar con abrazaderas de fleje.

D.E. Tubing	A (in)	B (in)	Pared Nominal (in)	Acero Inoxidable 316L # de Parte
1"	3.00	1.03	.116	14WHRL-R100
1-1/2"	4.50	1.53	.116	14WHRL-R150
2"	4.50	2.03	.116	14WHRL-R200
2-1/2"	5.00	2.53	.116	14WHRL-R250
3"	5.00	3.03	.116	14WHRL-R300
4"	4.88	4.03	.116	14WHRL-R400

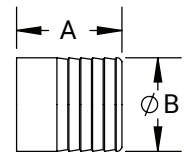
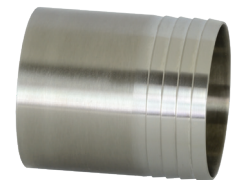


NOTA: El uso de tubing de PVC requiere de técnicas especiales para prevenir fugas. La labor de ensamble debe realizarse con tubing calentado. El durometro en frío es de 90 opuesto al de la manguera de hule de durómetro 65 a 70. Las hebillas del fleje deben posicionarse a 180° una de otra.



Adaptador de Manguera Soldable - 14WHR

D.E. Tubing	A (in)	B (in)	Pared Nominal (in)	Acero Inoxidable 316L # de Parte
1/2"	1.50	.50	.065	14WHR-R50
3/4"	1.50	.75	.065	14WHR-R75
1"	1.69	1.00	.065	14WHR-R100
1-1/2"	1.69	1.50	.065	14WHR-R150
2"	2.31	2.00	.065	14WHR-R200
2-1/2"	2.00	2.50	.065	14WHR-R250
3"	3.09	3.00	.065	14WHR-R300
4"	3.41	4.00	.083	14WHR-R400

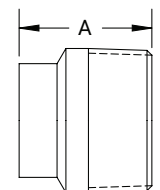


Adaptador Macho NPT x Extremo Soldable - B19WB

Característica:

- D.I. con acabado 32Ra unicamente.

D.E. Tubing	A (in)	Pared Nominal (in)	Acero Inoxidable 304 # de Parte	Acero Inoxidable 316L # de Parte
1/2"	1.63	.065	---	B19WB-R50
3/4"	1.63	.065	---	B19WB-R75
1"	1.75	.065	B19WB-G100	B19WB-R100
1-1/2"	1.75	.065	B19WB-G150	B19WB-R150
2"	1.81	.065	B19WB-G200	B19WB-R200
2-1/2"	2.31	.065	B19WB-G250	B19WB-R250
3"	2.50	.065	B19WB-G300	B19WB-R300
4"	2.56	.083	B19WB-G400	B19WB-R400
6"	3.40	.109	---	B19WB-R600



N

Adaptador Hembra NPT x Extremo Soldable - B22WB

Característica:

- D.I. con acabado 32Ra unicamente.

D.E. Tubing	A (in)	Pared Nominal (in)	Acero Inoxidable 304 # de Parte	Acero Inoxidable 316L # de Parte
1/2"	1.25	.065	---	B22WB-R50
3/4"	1.63	.065	---	B22WB-R75
1"	1.75	.065	B22WB-G100	B22WB-R100
1-1/2"	1.75	.065	B22WB-G150	B22WB-R150
2"	1.81	.065	B22WB-G200	B22WB-R200
2-1/2"	2.31	.065	B22WB-G250	B22WB-R250
3"	2.50	.065	B22WB-G300	B22WB-R300
4"	2.50	.083	B22WB-G400	B22WB-R400

