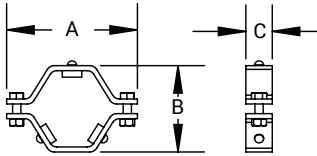


Soportes para Tubing

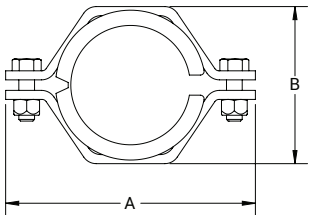
Soporte Hexagonal con Amortiguadores de Hule - B24RV¹



Medida Tubing	A (in)	B (in)	C (in)	Acero Inoxidable 304 # de Parte
1/2"	3.38	2.25	1.00	B24RV-G50
3/4"	3.38	2.19	1.00	B24RV-G75
1"	3.70	2.20	1.00	B24RV-G100
1-1/2"	4.40	2.80	1.00	B24RV-G150
2"	5.00	3.30	1.00	B24RV-G200
2-1/2"	5.60	3.70	1.00	B24RV-G250
3"	6.10	4.30	1.00	B24RV-G300
4"	7.60	5.00	1.00	B24RV-G400
6"	9.80	7.20	1.50	B24RV-G600
8"	12.25	9.38	1.50	B24RV-G800

¹ Para opciones de acople, llame a Dixon.

Soporte Hexagonal con Manga de Plástico - B24PV¹



Medida Tubing	A (in)	B (in)	Acero Inoxidable 304 # de Parte
1/2"	3.38	1.63	B24PV-G50
3/4"	3.38	1.63	B24PV-G75
1"	3.63	2.13	B24PV-G100
1-1/2"	4.31	2.63	B24PV-G150
2"	4.88	3.13	B24PV-G200
2-1/2"	4.88	3.13	B24PV-G250
3"	6.00	4.25	B24PV-G300
4"	7.50	5.63	B24PV-G400
5"	8.50	6.38	B24PV-G500
6"	9.75	7.38	B24PV-G600
8"	11.38	9.38	B24PV-G800

¹ Para opciones de acople, llame a Dixon.

Mangas - 13PV



Medida Tubing	Polipropileno # de Parte
3/4"	13PV-75
1"	13PV-100
1-1/2"	13PV-150
2"	13PV-200
2-1/2"	13PV-250
3"	13PV-300
4"	13PV-400
6"	13PV-600

NOTA: Para información adicional sobre medidas de tubing, consulte dixonvalve.com.