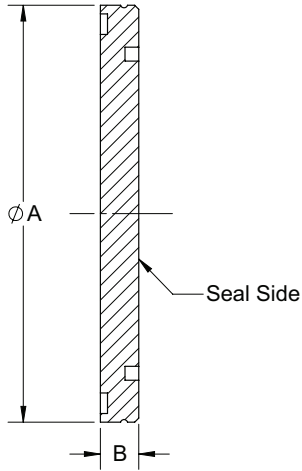


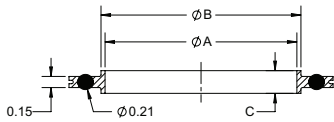
Conexiones para Vacío

Bridas ISO Ciegas



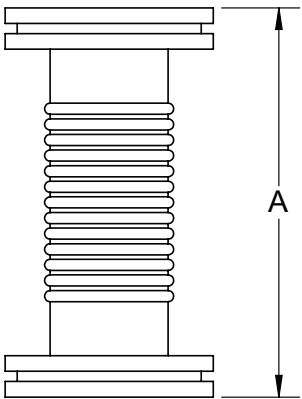
Medida de Brida	A (in)	B (in)	Acero Inoxidable 304 Part #
ISO63	3.74	0.47	DVF-B63GB
ISO80	4.33	0.47	DVF-B80GB
ISO100	5.12	0.47	DVF-B100GB
ISO160	7.09	0.47	DVF-B160GB
ISO200	9.45	0.47	DVF-B200GB
ISO250	11.42	0.47	DVF-B250GB

Ensamblajes ISO de Anillo Centrador



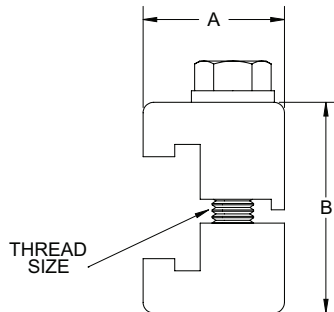
Medida de Brida	A (in)	B (in)	C (in)	Anillo Centrador de Acero Inoxidable 304 Anillo Espaciador de Aluminio O-ring FKM # de Parte
ISO63	2.63	2.74	0.31	DVF-B63GE
ISO80	3.14	3.25	0.31	DVF-B80GE
ISO100	3.89	4.00	0.31	DVF-B100GE
ISO160	5.90	6.01	0.31	DVF-B160GE
ISO200	8.26	8.37	0.31	DVF-B200GE

Fuelle ISO Flexible (Formado)



Medida de Brida	A (in)	Longitud Comprimido(in)	Acero Inoxidable 304 # de Parte
ISO63	7.00	6.00	DVF-B63GG
ISO80	7.00	6.00	DVF-B80GG
ISO100	7.00	6.00	DVF-B100GG
ISO160	7.00	6.00	DVF-B160GG
ISO200	7.00	6.00	DVF-B200GG
ISO250	13.50	10.50	DVF-B250GG

Abrazaderas ISO de Doble Agarre



Medida de Brida	A (in)	B (in)	Medida de Rosca	Cantidad de Abrazaderas Requeridas	Aluminio # de Parte
ISO63	0.94	1.96	5/16"-18	3 - 4	DVF-B63100LH
ISO80	0.94	1.96	5/16"-18	4 - 8	DVF-B63100LH
ISO100	0.94	1.96	5/16"-18	4 - 8	DVF-B63100LH
ISO160	1.10	1.96	5/16"-18	4 - 8	DVF-B160250LH
ISO200	1.10	1.96	5/16"-18	6 - 12	DVF-B160250LH
ISO250	1.10	1.96	5/16"-18	6 - 12	DVF-B160250LH

NOTA: Abrazaderas ISO se venden en múltiplos de 4.