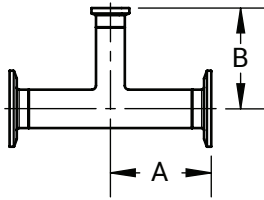
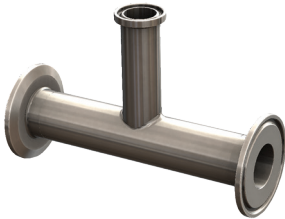


Conexiones Biofarmacéuticas "High Purity"

Tee Reductora Clamp x Clamp x Clamp - T7RMP

63-04
621

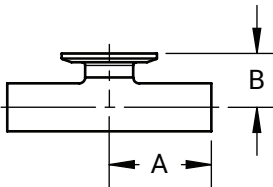
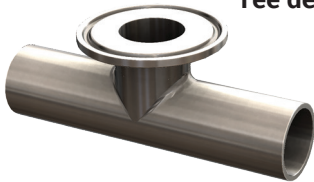


BPE Tabla DT-4.1.2-8
ASME BPE 2019

D.E. Tubing	A (in)	B (in)	Acabado PL - SF1	Acabado PM - SF4
3/4" x 1/2"	2.50	2.50	T7RMP-075050PL	T7RMP-075050PM
1" x 1/2"	2.63	2.63	T7RMP-100050PL	T7RMP-100050PM
1" x 3/4"	2.63	2.63	T7RMP-100075PL	T7RMP-100075PM
1-1/2" x 1/2"	2.88	2.88	T7RMP-150050PL	T7RMP-150050PM
1-1/2" x 3/4"	2.88	2.88	T7RMP-150075PL	T7RMP-150075PM
1-1/2" x 1"	2.88	2.88	T7RMP-150100PL	T7RMP-150100PM
2" x 1/2"	3.38	3.13	T7RMP-200050PL	T7RMP-200050PM
2" x 3/4"	3.38	3.13	T7RMP-200075PL	T7RMP-200075PM
2" x 1"	3.38	3.13	T7RMP-200100PL	T7RMP-200100PM
2" x 1-1/2"	3.38	3.13	T7RMP-200150PL	T7RMP-200150PM
2-1/2" x 1/2"	3.63	3.38	T7RMP-250050PL	T7RMP-250050PM
2-1/2" x 3/4"	3.63	3.38	T7RMP-250075PL	T7RMP-250075PM
2-1/2" x 1"	3.63	3.38	T7RMP-250100PL	T7RMP-250100PM
2-1/2" x 1-1/2"	3.63	3.38	T7RMP-250150PL	T7RMP-250150PM
2-1/2" x 2"	3.63	3.38	T7RMP-250200PL	T7RMP-250200PM
3" x 1/2"	3.88	3.63	T7RMP-300050PL	T7RMP-300050PM
3" x 3/4"	3.88	3.63	T7RMP-300075PL	T7RMP-300075PM
3" x 1"	3.88	3.63	T7RMP-300100PL	T7RMP-300100PM
3" x 1-1/2"	3.88	3.63	T7RMP-300150PL	T7RMP-300150PM
3" x 2"	3.88	3.63	T7RMP-300200PL	T7RMP-300200PM
3" x 2-1/2"	3.88	3.63	T7RMP-300250PL	T7RMP-300250PM
4" x 1/2"	4.75	4.13	T7RMP-400050PL	T7RMP-400050PM
4" x 3/4"	4.75	4.13	T7RMP-400075PL	T7RMP-400075PM
4" x 1"	4.75	4.13	T7RMP-400100PL	T7RMP-400100PM
4" x 1-1/2"	4.75	4.13	T7RMP-400150PL	T7RMP-400150PM
4" x 2"	4.75	4.38	T7RMP-400200PL	T7RMP-400200PM
4" x 2-1/2"	4.75	4.38	T7RMP-400250PL	T7RMP-400250PM
4" x 3"	4.75	4.38	T7RMP-400300PL	T7RMP-400300PM
6" x 3"	7.13	5.38	T7RMP-600300PL	T7RMP-600300PM
6" x 4"	7.13	5.75	T7RMP-600400PL	T7RMP-600400PM

63-04
621

Tee de Salida Corta Extremo Soldable x Extremo Soldable x Clamp - T7WWMS



BPE Tabla DT-4.1.2-2
ASME BPE 2019

D.E. Tubing	A (in)	B (in)	Acabado PL - SF1	Acabado PM - SF4
1/2"	1.88	1.00	T7WWMS-050PL	T7WWMS-050PM
3/4"	2.00	1.13	T7WWMS-075PL	T7WWMS-075PM
1"	2.13	1.13	T7WWMS-100PL	T7WWMS-100PM
1-1/2"	2.38	1.38	T7WWMS-150PL	T7WWMS-150PM
2"	2.88	1.63	T7WWMS-200PL	T7WWMS-200PM
2-1/2"	3.13	1.88	T7WWMS-250PL	T7WWMS-250PM
3"	3.38	2.13	T7WWMS-300PL	T7WWMS-300PM
4"	4.13	2.75	T7WWMS-400PL	T7WWMS-400PM
6"	5.63	4.63	T7WWMS-600PL	T7WWMS-600PM

NOTA: Especificaciones BPE 2019.

Acabado PL – SF1.
D.E. = 32Ra Pulido Mecánico.
D.I. = 20Ra Pulido Mecánico.

Acabado PM – SF4.
D.E. = 32Ra Pulido Mecánico.
D.I. = 15Ra Pulido Mecánico y Electropulido.