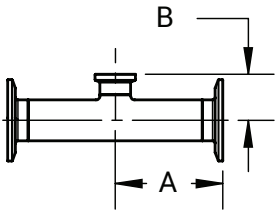
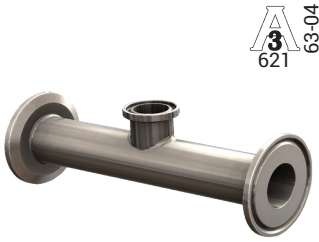


Conexiones Biofarmacéuticas "High Purity"

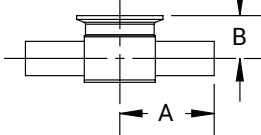
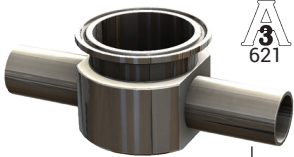
Tee Reductora de Salida Corta Clamp x Clamp x Clamp - T7RMPS



BPE Tabla DT-4.1.2-9
ASME BPE 2019

D.E. Tubing	A (in)	B (in)	Acabado PL - SF1	Acabado PM - SF4
3/4" x 1/2"	2.50	1.00	T7RMPS-075050PL	T7RMPS-075050PM
1" x 1/2"	2.63	1.13	T7RMPS-100050PL	T7RMPS-100050PM
1" x 3/4"	2.63	1.13	T7RMPS-100075PL	T7RMPS-100075PM
1-1/2" x 1/2"	2.88	1.38	T7RMPS-150050PL	T7RMPS-150050PM
1-1/2" x 3/4"	2.88	1.38	T7RMPS-150075PL	T7RMPS-150075PM
1-1/2" x 1"	2.88	1.38	T7RMPS-150100PL	T7RMPS-150100PM
2" x 1/2"	3.38	1.63	T7RMPS-200050PL	T7RMPS-200050PM
2" x 3/4"	3.38	1.63	T7RMPS-200075PL	T7RMPS-200075PM
2" x 1"	3.38	1.63	T7RMPS-200100PL	T7RMPS-200100PM
2" x 1-1/2"	3.38	1.63	T7RMPS-200150PL	T7RMPS-200150PM
2-1/2" x 1/2"	3.63	1.88	T7RMPS-250050PL	T7RMPS-250050PM
2-1/2" x 3/4"	3.63	1.88	T7RMPS-250075PL	T7RMPS-250075PM
2-1/2" x 1"	3.63	1.88	T7RMPS-250100PL	T7RMPS-250100PM
2-1/2" x 1-1/2"	3.63	1.88	T7RMPS-250150PL	T7RMPS-250150PM
2-1/2" x 2"	3.63	1.88	T7RMPS-250200PL	T7RMPS-250200PM
3" x 1/2"	3.88	2.13	T7RMPS-300050PL	T7RMPS-300050PM
3" x 3/4"	3.88	2.13	T7RMPS-300075PL	T7RMPS-300075PM
3" x 1"	3.88	2.13	T7RMPS-300100PL	T7RMPS-300100PM
3" x 1-1/2"	3.88	2.13	T7RMPS-300150PL	T7RMPS-300150PM
3" x 2"	3.88	2.13	T7RMPS-300200PL	T7RMPS-300200PM
3" x 2-1/2"	3.88	2.13	T7RMPS-300250PL	T7RMPS-300250PM
4" x 1/2"	4.75	2.63	T7RMPS-400050PL	T7RMPS-400050PM
4" x 3/4"	4.75	2.63	T7RMPS-400075PL	T7RMPS-400075PM
4" x 1"	4.75	2.63	T7RMPS-400100PL	T7RMPS-400100PM
4" x 1-1/2"	4.75	2.63	T7RMPS-400150PL	T7RMPS-400150PM
4" x 2"	4.75	2.63	T7RMPS-400200PL	T7RMPS-400200PM
4" x 2-1/2"	4.75	2.63	T7RMPS-400250PL	T7RMPS-400250PM
4" x 3"	4.75	2.63	T7RMPS-400300PL	T7RMPS-400300PM
6" x 3"	7.13	3.63	T7RMPS-600300PL	T7RMPS-600300PM
6" x 4"	7.13	3.75	T7RMPS-600400PL	T7RMPS-600400PM

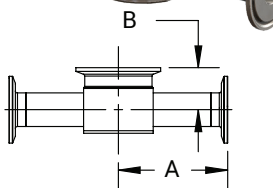
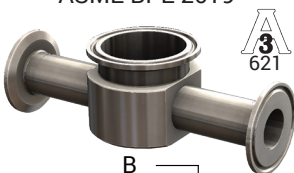
Tee de Instrumentación Extremo Soldable x Extremo Soldable x Clamp - T7IWWMS



BPE Tabla DT-4.1.2-10
ASME BPE 2019

D.E. Tubing	A (in)	B (in)	Acabado PL - SF1	Acabado PM - SF4
1/2" x 1-1/2"	2.50	.88	T7IWWMS050150PL	T7IWWMS050150PM
3/4" x 1-1/2"	2.50	1.00	T7IWWMS075150PL	T7IWWMS075150PM
1" x 1-1/2"	2.50	1.13	T7IWWMS100150PL	T7IWWMS100150PM
1/2" x 2"	2.75	1.00	T7IWWMS050200PL	T7IWWMS050200PM
3/4" x 2"	2.75	1.13	T7IWWMS075200PL	T7IWWMS075200PM
1" x 2"	2.75	1.25	T7IWWMS100200PL	T7IWWMS100200PM
1-1/2" x 2"	2.75	1.50	T7IWWMS150200PL	T7IWWMS150200PM

Tee de Instrumentación Clamp x Clamp x Clamp - T7IMPS



BPE Tabla DT-4.1.2-11
ASME BPE 2019

D.E. Tubing	A (in)	B (in)	Acabado PL - SF1	Acabado PM - SF4
1/2" x 1-1/2"	3.00	.88	T7IMPS-050150PL	T7IMPS-050150PM
3/4" x 1-1/2"	3.00	1.00	T7IMPS-075150PL	T7IMPS-075150PM
1" x 1-1/2"	3.00	1.13	T7IMPS-100150PL	T7IMPS-100150PM
1/2" x 2"	3.25	1.00	T7IMPS-050200PL	T7IMPS-050200PM
3/4" x 2"	3.25	1.13	T7IMPS-075200PL	T7IMPS-075200PM
1" x 2"	3.25	1.25	T7IMPS-100200PL	T7IMPS-100200PM
1-1/2" x 2"	3.25	1.50	T7IMPS150200PL	T7IMPS150200PM

NOTA: Especificaciones BPE 2019.

Acabado PL – SF1.

D.E. = 32Ra Pulido Mecánico.

D.I. = 20Ra Pulido Mecánico.

Acabado PM – SF4.

D.E. = 32Ra Pulido Mecánico.

D.I. = 15Ra Pulido Mecánico y Electropolido.