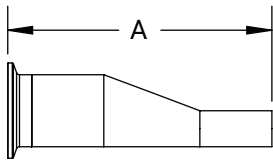
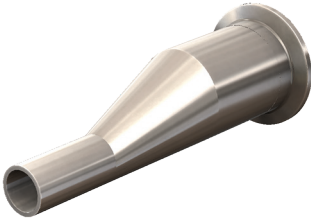


**Conexiones Biofarmacéuticas "High Purity"**

**Reductor Excéntrico Clamp x Extremo Soldable - T32M**

3  
621 63-04

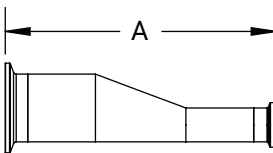


BPE Tabla DT-4.1.3-2(a)

D.E. Tubing.	A (in)	Acabado PL - SF1	Acabado PM - SF4
3/4" x 1/2"	3.00	T32M-075050PL	T32M-075050PM
1" x 1/2"	3.50	T32M-100050PL	T32M-100050PM
1" x 3/4"	3.00	T32M-100075PL	T32M-100075PM
1-1/2" x 1/2"	4.50	T32M-150050PL	T32M-150050PM
1-1/2" x 3/4"	4.00	T32M-150075PL	T32M-150075PM
1-1/2" x 1"	4.00	T32M-150100PL	T32M-150100PM
2" x 1/2"	6.50	T32M-200050PL	T32M-200050PM
2" x 3/4"	6.00	T32M-200075PL	T32M-200075PM
2" x 1"	6.00	T32M-200100PL	T32M-200100PM
2" x 1-1/2"	4.00	T32M-200150PL	T32M-200150PM
2-1/2" x 1/2"	8.50	T32M-250050PL	T32M-250050PM
2-1/2" x 3/4"	8.00	T32M-250075PL	T32M-250075PM
2-1/2" x 1"	8.00	T32M-250100PL	T32M-250100PM
2-1/2" x 1-1/2"	6.00	T32M-250150PL	T32M-250150PM
2-1/2" x 2"	4.25	T32M-250200PL	T32M-250200PM
3" x 1"	10.00	T32M-300100PL	T32M-300100PM
3" x 1-1/2"	8.00	T32M-300150PL	T32M-300150PM
3" x 2"	6.25	T32M-300200PL	T32M-300200PM
3" x 2-1/2"	4.25	T32M-300250PL	T32M-300250PM
4" x 1"	14.13	T32M-400100PL	T32M-400100PM
4" x 1-1/2"	12.13	T32M-400150PL	T32M-400150PM
4" x 2"	10.38	T32M-400200PL	T32M-400200PM
4" x 2-1/2"	8.38	T32M-400250PL	T32M-400250PM
4" x 3"	6.38	T32M-400300PL	T32M-400300PM
6" x 3"	8.75	T32M-600300PL	T32M-600300PM
6" x 4"	9.00	T32M-600400PL	T32M-600400PM

**Reductor Excéntrico Clamp x Clamp - T3214MP**

3  
621 63-04



BPE Tabla DT-4.1.3-3(a)

D.E. Tubing.	A (in)	Acabado PL - SF1	Acabado PM - SF4
3/4" x 1/2"	2.00	T3214MP075050PL	T3214MP075050PM
1" x 1/2"	2.50	T3214MP100050PL	T3214MP100050PM
1" x 3/4"	2.00	T3214MP100075PL	T3214MP100075PM
1-1/2" x 1/2"	3.50	T3214MP150050PL	T3214MP150050PM
1-1/2" x 3/4"	3.00	T3214MP150075PL	T3214MP150075PM
1-1/2" x 1"	3.00	T3214MP150100PL	T3214MP150100PM
2" x 1/2"	5.50	T3214MP200050PL	T3214MP200050PM
2" x 3/4"	5.00	T3214MP200075PL	T3214MP200075PM
2" x 1"	5.00	T3214MP200100PL	T3214MP200100PM
2" x 1-1/2"	3.00	T3214MP200150PL	T3214MP200150PM
2-1/2" x 1/2"	7.50	T3214MP250050PL	T3214MP250050PM
2-1/2" x 3/4"	7.00	T3214MP250075PL	T3214MP250075PM
2-1/2" x 1"	7.00	T3214MP250100PL	T3214MP250100PM
2-1/2" x 1-1/2"	5.00	T3214MP250150PL	T3214MP250150PM
2-1/2" x 2"	3.00	T3214MP250200PL	T3214MP250200PM
3" x 1"	9.00	T3214MP300100PL	T3214MP300100PM
3" x 1-1/2"	7.00	T3214MP300150PL	T3214MP300150PM
3" x 2"	5.00	T3214MP300200PL	T3214MP300200PM
3" x 2-1/2"	3.00	T3214MP300250PL	T3214MP300250PM
4" x 1"	13.13	T3214MP400100PL	T3214MP400100PM
4" x 1-1/2"	11.13	T3214MP400150PL	T3214MP400150PM
4" x 2"	9.13	T3214MP400200PL	T3214MP400200PM
4" x 2-1/2"	7.13	T3214MP400250PL	T3214MP400250PM
4" x 3"	5.13	T3214MP400300PL	T3214MP400300PM
6" x 3"	7.63	T3214MP600300PL	T3214MP600300PM
6" x 4"	7.63	T3214MP600400PL	T3214MP600400PM

NOTA: Especificaciones BPE 2019.

Acabado PL – SF1.  
D.E. = 32Ra Pulido Mecánico.  
D.I. = 20Ra Pulido Mecánico.

Acabado PM – SF4.  
D.E. = 32Ra Pulido Mecánico.  
D.I. = 15Ra Pulido Mecánico y Electropulido.